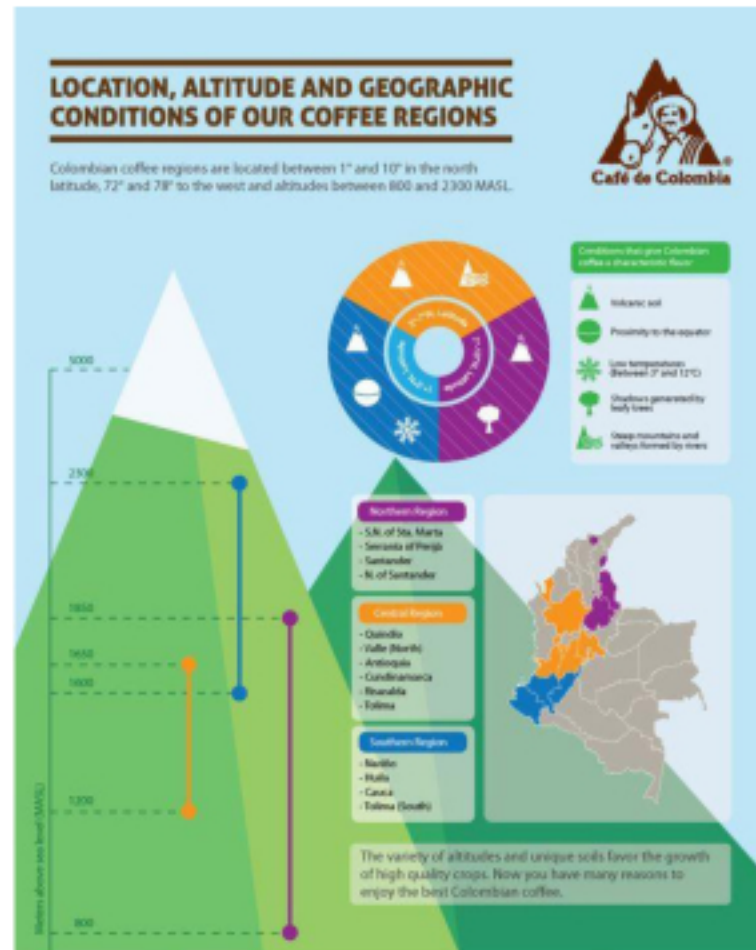




Colombia – *A Myriad of Flavours*

Most Colombian coffee growers live in small farms whose coffee plots do not surpass 2 hectares. The reduced dimensions of their coffee farms have allowed maintaining an essentially family oriented activity to Colombian coffee culture.

The classic Colombian profile brings together mellow acidity and a strong caramel sweetness with nutty undertones and notes of yellow fruit.



Among the 563.000 coffee growing families, in 588 municipalities of 20 departments in Colombia one will find an astonishing diversity in languages, cultures and races: the coffee people. The country features great climatic variety between warm, cold, temperate and freezing depending on the altitude in its coffee regions. It has coasts on the Pacific and Atlantic oceans. Water sources are plentiful and Colombia enjoys bimodal rainfall providing a competitive advantage in coffee production.